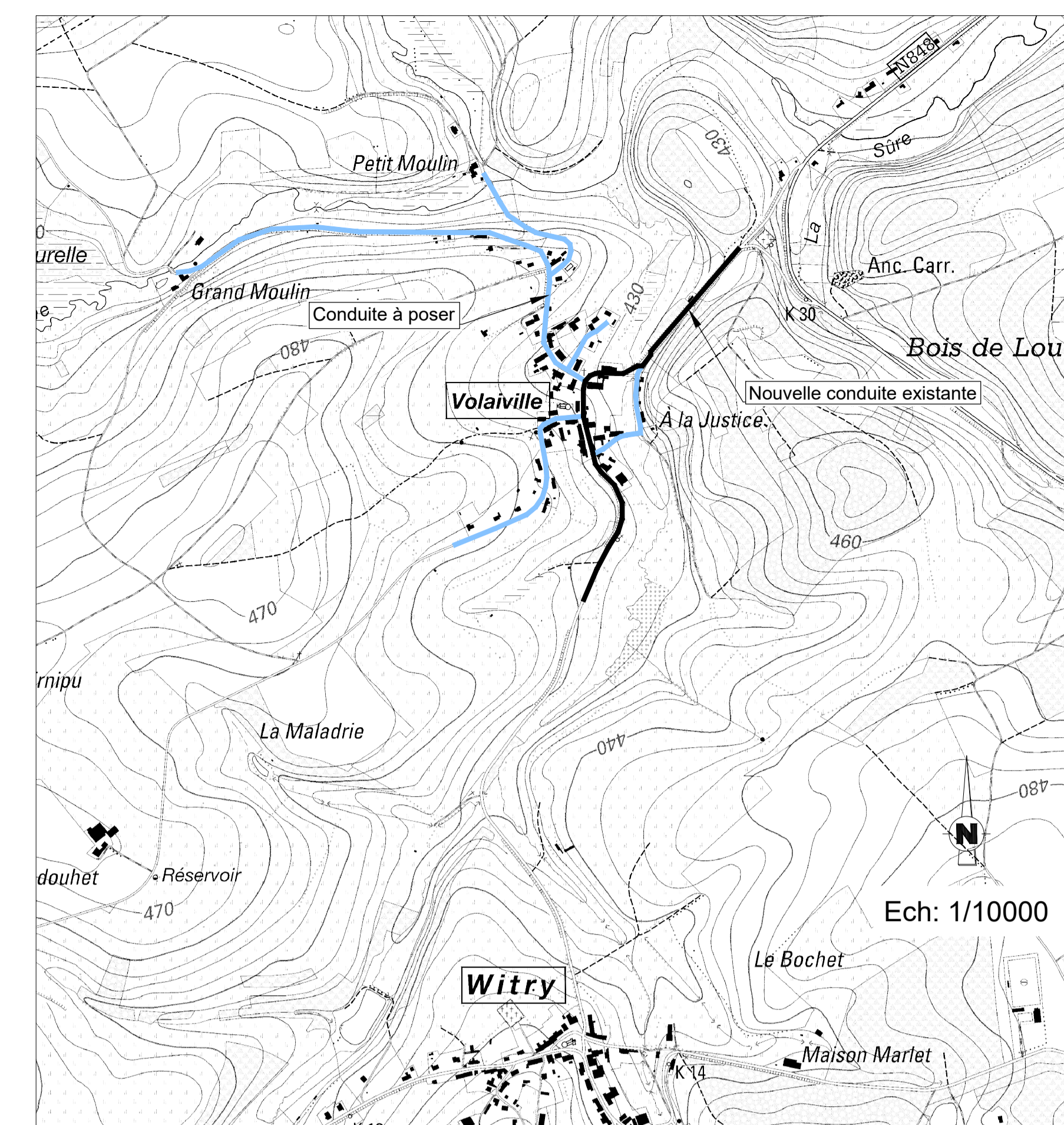


Plan terrier 1

Ech: 1/500

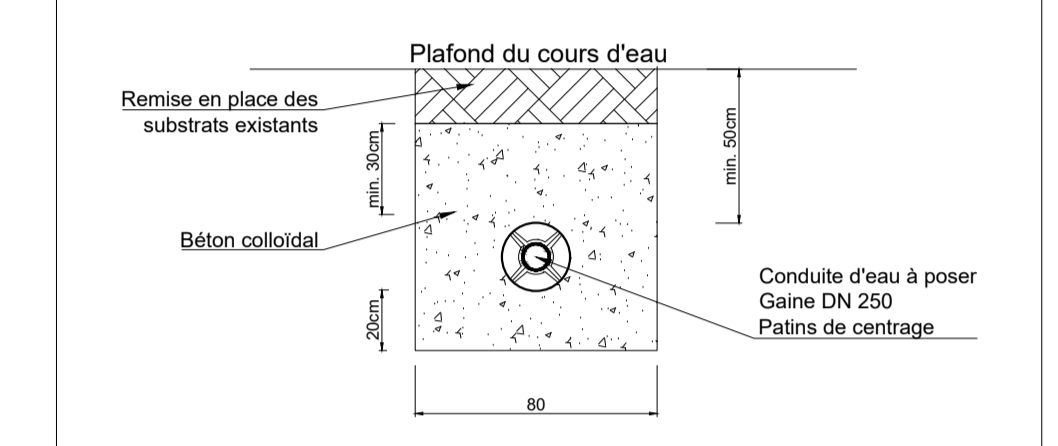
Volaiville

Plan de situation (IGN 65/6)

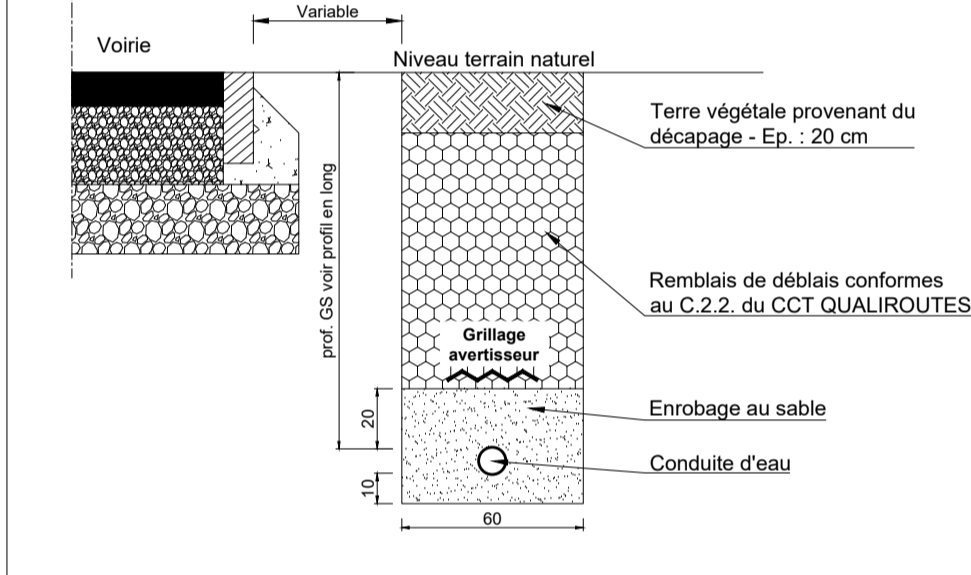


- LEGENDE
- Existant
 - DN 60 mm fonte
 - DN 80 mm fonte
 - DN 110 mm PVC
 - Bouche incendie
 - Vanne en terre
 - Chambre de vanne
 - Câble tel.
 - Câble haute tension
 - VOO
 - Tuyau d'égout
 - Limite cadastrale
 - A poser
 - DE 80 mm PVC
 - DE 63 mm PVC
 - Vanne en terre
 - Bouche incendie
 - Bouche incendie - point bas
 - Bouche incendie - Point haut

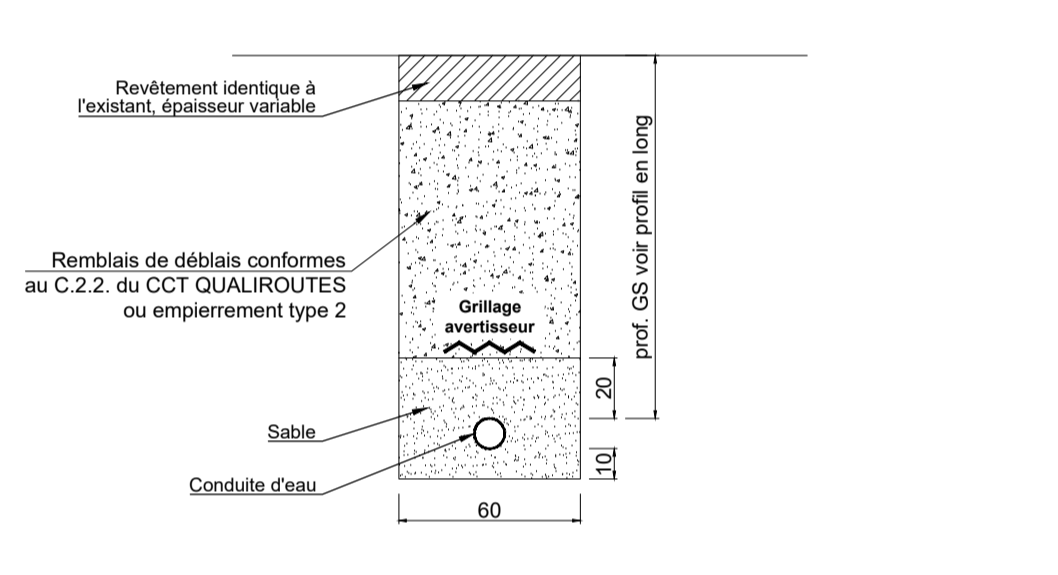
Coupe type traversée du ruisseau de Moyémont Ech. 1/25



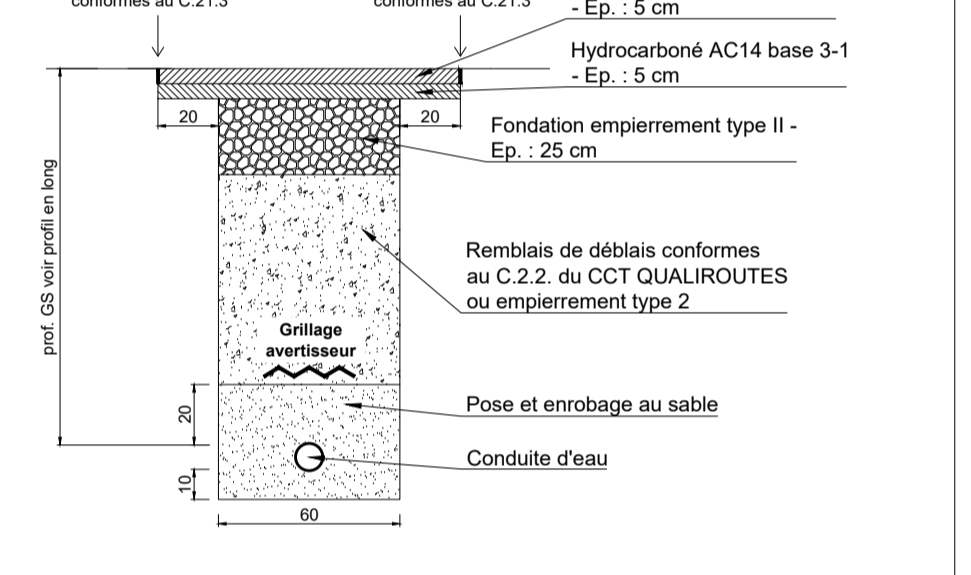
Coupe type de la réfection en accotement non revêtu Ech.1/25



Coupe type de la réfection en accotement revêtu ou en chemin empierré Ech.1/25



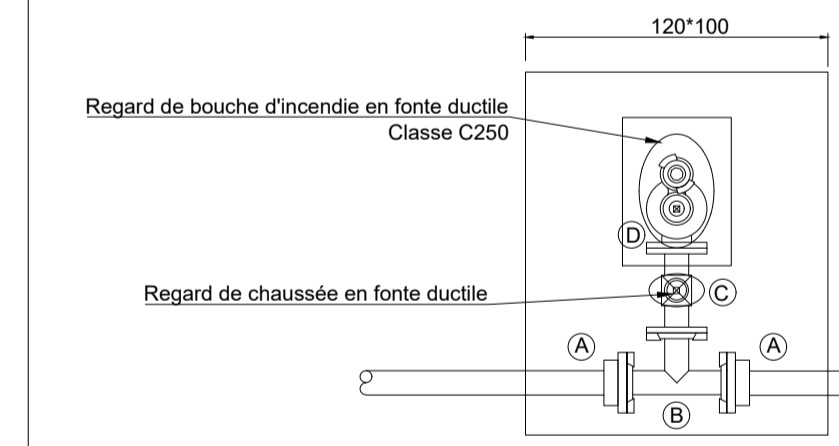
Coupe type de la réfection en voirie communale Ech.1/25



Détail d'une bouche incendie avec vanne à poser sur DE90

Vue en plan Ech:1/25

dalle de protection en béton armé. Ep. : 20cm

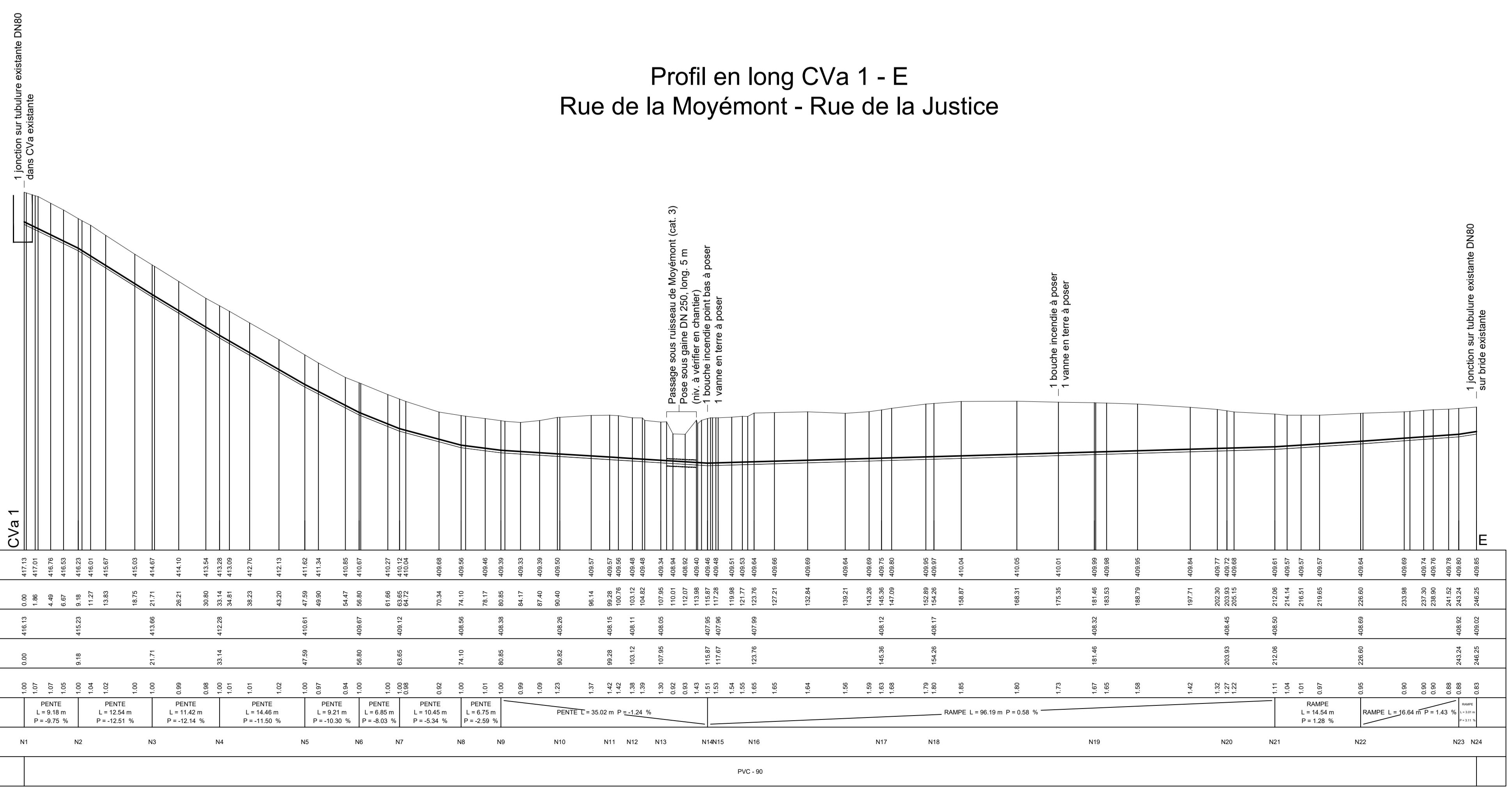


Légende

- A. Brière autobutée DN80 mm pour DE90 mm
- B. Te BS85 3030/80
- C. Vanne à coin 28 DN80 PN16 + équipements de manoeuvre
- D. Bouche incendie DN80 PN16 sur coudé + esse de réglage

Remarque importante
La position, le nombre et la nature des canalisations et câbles existants sont donnés à titre indicatif. L'entrepreneur est tenu de les localiser sur base de ses propres investigations.

Profil en long CVa 1 - E Rue de la Moyémont - Rue de la Justice



Echelle en Y : 1/100

Echelle en X : 1/500

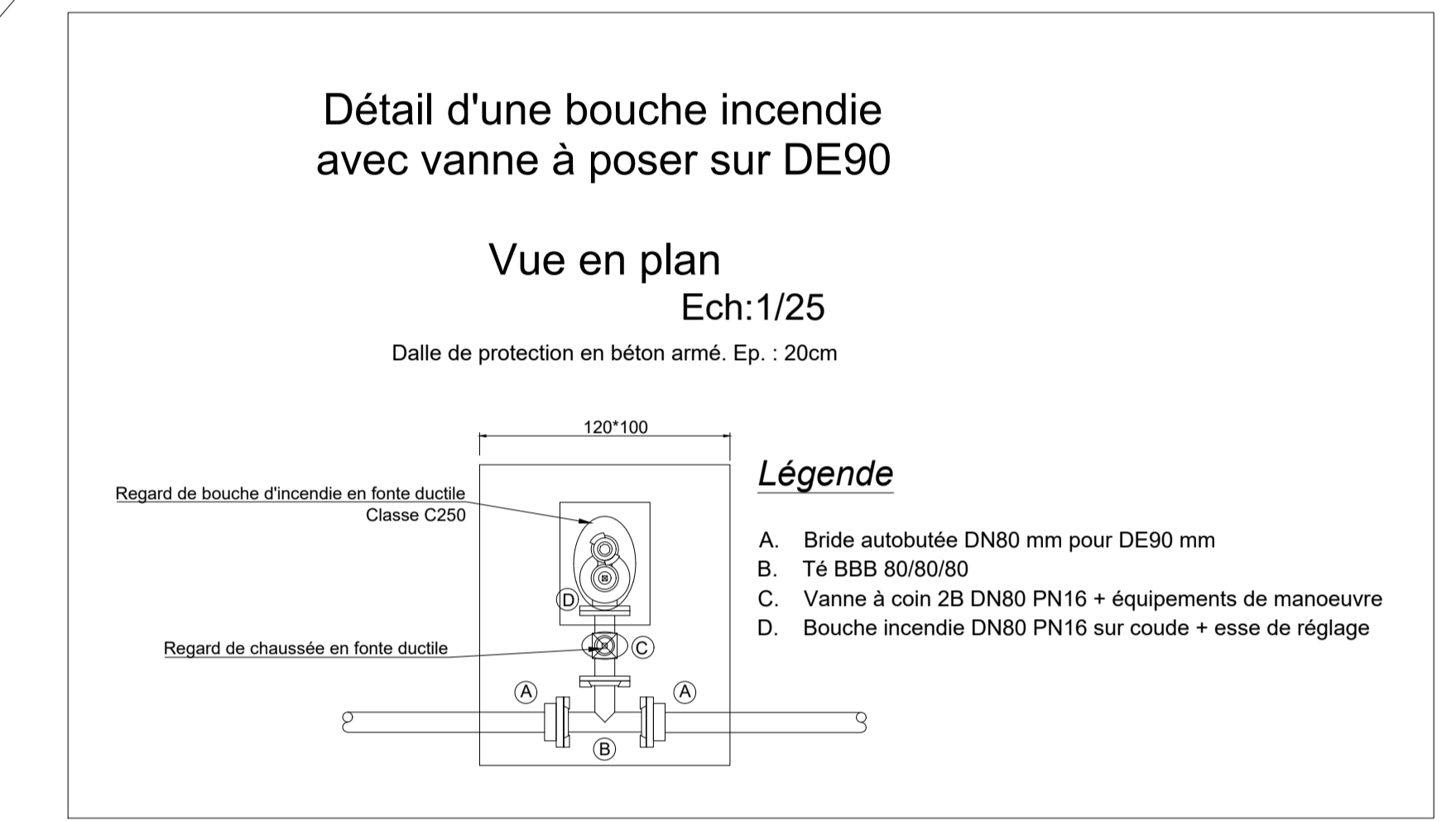
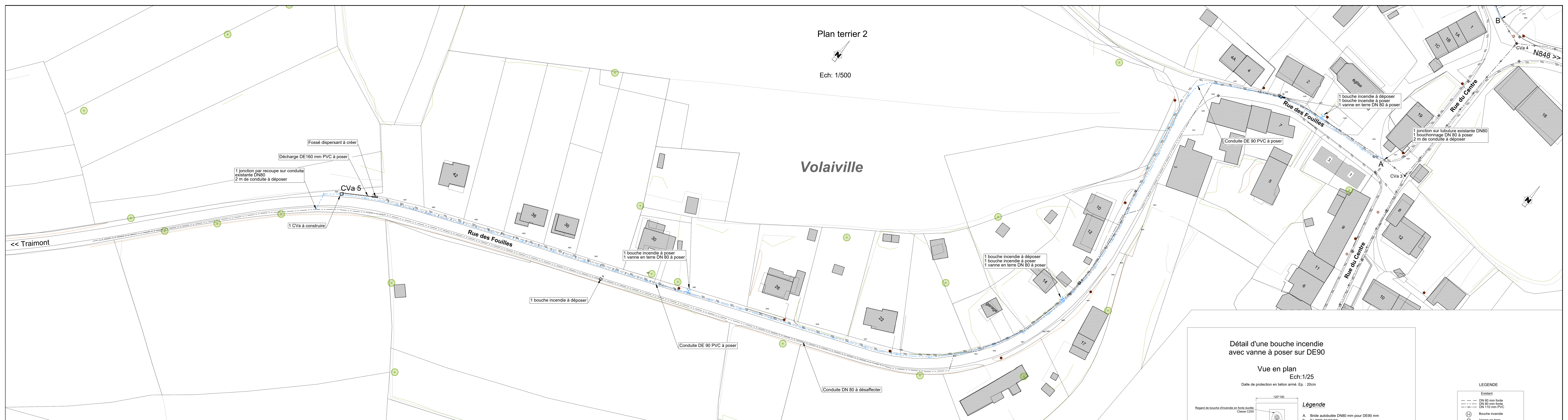
PC : 405.00 m

Distances cumulées (TN)	Distances cumulées (Projet)	Profondeurs (Génétratrice sup.)	Pentes et rampes	Numéros des noeuds	Diamètre conduite
0.00	0.00	4.00	PENTE L=1.14 (0.28%) P=-0.25%	N1	
1.00	1.00	3.95	PENTE L=1.14 (0.28%) P=-0.25%	N2	
2.00	2.00	3.90	PENTE L=1.14 (0.28%) P=-0.25%	N3	
3.00	3.00	3.85	PENTE L=1.14 (0.28%) P=-0.25%	N4	
4.00	4.00	3.80	PENTE L=1.14 (0.28%) P=-0.25%	N5	
5.00	5.00	3.75	PENTE L=1.14 (0.28%) P=-0.25%	N6	
6.00	6.00	3.70	PENTE L=1.14 (0.28%) P=-0.25%	N7	
7.00	7.00	3.65	PENTE L=1.14 (0.28%) P=-0.25%	N8	
8.00	8.00	3.60	PENTE L=1.14 (0.28%) P=-0.25%	N9	
9.00	9.00	3.55	PENTE L=1.14 (0.28%) P=-0.25%	N10	
10.00	10.00	3.50	PENTE L=1.14 (0.28%) P=-0.25%	N11	
11.00	11.00	3.45	PENTE L=1.14 (0.28%) P=-0.25%	N12	
12.00	12.00	3.40	PENTE L=1.14 (0.28%) P=-0.25%	N13	
13.00	13.00	3.35	PENTE L=1.14 (0.28%) P=-0.25%	N14	
14.00	14.00	3.30	PENTE L=1.14 (0.28%) P=-0.25%	N15	
15.00	15.00	3.25	PENTE L=1.14 (0.28%) P=-0.25%	N16	
16.00	16.00	3.20	PENTE L=1.14 (0.28%) P=-0.25%	N17	
17.00	17.00	3.15	PENTE L=1.14 (0.28%) P=-0.25%	N18	
18.00	18.00	3.10	PENTE L=1.14 (0.28%) P=-0.25%	N19	
19.00	19.00	3.05	PENTE L=1.14 (0.28%) P=-0.25%	N20	
20.00	20.00	3.00	PENTE L=1.14 (0.28%) P=-0.25%	N21	
21.00	21.00	2.95	PENTE L=1.14 (0.28%) P=-0.25%	N22	
22.00	22.00	2.90	PENTE L=1.14 (0.28%) P=-0.25%	N23	
23.00	23.00	2.85	PENTE L=1.14 (0.28%) P=-0.25%	N24	
24.00	24.00	2.80	PENTE L=1.14 (0.28%) P=-0.25%	N25	
25.00	25.00	2.75	PENTE L=1.14 (0.28%) P=-0.25%	N26	
26.00	26.00	2.70	PENTE L=1.14 (0.28%) P=-0.25%	N27	
27.00	27.00	2.65	PENTE L=1.14 (0.28%) P=-0.25%	N28	
28.00	28.00	2.60	PENTE L=1.14 (0.28%) P=-0.25%	N29	
29.00	29.00	2.55	PENTE L=1.14 (0.28%) P=-0.25%	N30	
30.00	30.00	2.50	PENTE L=1.14 (0.28%) P=-0.25%	N31	
31.00	31.00	2.45	PENTE L=1.14 (0.28%) P=-0.25%	N32	
32.00	32.00	2.40	PENTE L=1.14 (0.28%) P=-0.25%	N33	
33.00	33.00	2.35	PENTE L=1.14 (0.28%) P=-0.25%	N34	
34.00	34.00	2.30	PENTE L=1.14 (0.28%) P=-0.25%	N35	
35.00	35.00	2.25	PENTE L=1.14 (0.28%) P=-0.25%	N36	
36.00	36.00	2.20	PENTE L=1.14 (0.28%) P=-0.25%	N37	
37.00	37.00	2.15	PENTE L=1.14 (0.28%) P=-0.25%	N38	
38.00	38.00	2.10	PENTE L=1.14 (0.28%) P=-0.25%	N39	
39.00	39.00	2.05	PENTE L=1.14 (0.28%) P=-0.25%	N40	
40.00	40.00	2.00	PENTE L=1.14 (0.28%) P=-0.25%	N41	
41.00	41.00	1.95	PENTE L=1.14 (0.28%) P=-0.25%	N42	
42.00	42.00	1.90	PENTE L=1.14 (0.28%) P=-0.25%	N43	
43.00	43.00	1.85	PENTE L=1.14 (0.28%) P=-0.25%	N44	
44.00	44.00	1.80	PENTE L=1.14 (0.28%) P=-0.25%	N45	
45.00	45.00	1.75	PENTE L=1.14 (0.28%) P=-0.25%	N46	
46.00	46.00	1.70	PENTE L=1.14 (0.28%) P=-0.25%	N47	
47.00	47.00	1.65	PENTE L=1.14 (0.28%) P=-0.25%	N48	
48.00	48.00	1.60	PENTE L=1.14 (0.28%) P=-0.25%	N49	
49.00	49.00	1.55	PENTE L=1.14 (0.28%) P=-0.25%	N50	
50.00	50.00	1.50	PENTE L=1.14 (0.28%) P=-0.25%	N51	
51.00	51.00	1.45	PENTE L=1.14 (0.28%) P=-0.25%	N52	
52.00	52.00	1.40	PENTE L=1.14 (0.28%) P=-0.25%	N53	
53.00	53.00	1.35	PENTE L=1.14 (0.28%) P=-0.25%	N54	
54.00	54.00	1.30	PENTE L=1.14 (0.28%) P=-0.25%	N55	
55.00	55.00	1.25	PENTE L=1.14 (0.28%) P=-0.25%	N56	
56.00	56.00	1.20	PENTE L=1.14 (0.28%) P=-0.25%	N57	
57.00	57.00	1.15	PENTE L=1.14 (0.28%) P=-0.25%	N58	
58.00	58.00	1.10	PENTE L=1.14 (0.28%) P=-0.25%	N59	
59.00	59.00	1.05	PENTE L=1.14 (0.28%) P=-0.25%	N60	
60.00	60.00	1.00	PENTE L=1.14 (0.28%) P=-0.25%	N61	
61.00	61.00	0.95	PENTE L=1.14 (0.28%) P=-0.25%	N62	
62.00	62.00	0.90	PENTE L=1.14 (0.28%) P=-0.25%	N63	
63.00	63.00	0.85	PENTE L=1.14 (0.28%) P=-0.25%	N64	
64.00	64.00	0.80	PENTE L=1.14 (0.28%) P=-0.25%	N65	
65.00	65.00	0.75	PENTE L=1.14 (0.28%) P=-0.25%	N66	
66.00	66.00	0.70	PENTE L=1.14 (0.28%) P=-0.25%	N67	
67.00	67.00	0.65	PENTE L=1.14 (0.28%) P=-0.25%	N68	
68.00	68.00	0.60	PENTE L=1.14 (0.28%) P=-0.25%	N69	
69.00	69.00	0.55	PENTE L=1.14 (0.28%) P=-0.25%	N70	
70.00	70.00	0.50	PENTE L=1.14 (0.28%) P=-0.25%	N71	
71.00	71.00	0.45	PENTE L=1.14 (0.28%) P=-0.25%	N72	
72.00	72.00	0.40	PENTE L=1.14 (0.28%) P=-0.25%	N73	
73.00	73.00	0.35	PENTE L=1.14 (0.28%) P=-0.25%	N74	
74.00	74.00	0.30	PENTE L=1.14 (0.28%) P=-0.25%	N75	
75.00	75.00	0.25	PENTE L=1.14 (0.28%) P=-0.25%	N76	
76.00	76.00	0.20	PENTE L=1.14 (0.28%) P=-0.25%	N77	
77.00	77.00	0.15	PENTE L=1.14 (0.28%) P=-0.25%	N78	
78.00	78.00	0.10	PENTE L=1.14 (0.28%) P=-0.25%	N79	
79.00	79.00	0.05	PENTE L=1.14 (0.28%) P=-0.25%	N80	
80.00	80.00	0.00	PENTE L=1.14 (0.28%) P=-0.25%	N81	
81.00	81.00	-0.05	PENTE L=1.14 (0.28%) P=-0.25%	N82	
82.00	82.00	-0.10	PENTE L=1.14 (0.28%) P=-0.25%	N83	
83.00	83.00	-0.15	PENTE L=1.14 (0.28%) P=-0.25%	N84	
84.00	84.00	-0.20	PENTE L=1.14 (0.28%) P=-0.25%	N85	
85.00	85.00	-0.25	PENTE L=1.14 (0.28%) P=-0.25%	N86	
86.00	86.00	-0.30	PENTE L=1.14 (0.28%) P=-0.25%	N87	
87.00	87.00	-0.35	PENTE L=1.14 (0.28%) P=-0.25%	N88	
88.00	88.00	-0.40	PENTE L=1.14 (0.28%) P=-0.25%	N89	
89.00	89.00	-0.45	PENTE L=1.14 (0.28%) P=-0.25%	N90	
90.00	90.00	-0.50	PENTE L=1.14 (0.28%) P=-0.25%	N91	
91.00	91.00	-0.55	PENTE L=1.14 (0.28%) P=-0.25%	N92	
92.00	92.00	-0.60	PENTE L=1.14 (0.28%) P=-0.25%	N93	
93.00	93.00	-0.65	PENTE L=1.14 (0.28%) P=-0.25%	N94	
94.00	94.00	-0.70	PENTE L=1.14 (0.28%) P=-0.25%	N95	
95.00	95.00	-0.75	PENTE L=1.14 (0.28%) P=-0.25%	N96	
96.00	96.00	-0.80	PENTE L=1.14 (0.28%) P=-0.25%	N97	
97.00	97.00	-0.85	PENTE L=1.14 (0.28%) P=-0.25%	N98	
98.00	98.00	-0.90	PENTE L=1.14 (0.28%) P=-0.25%	N99	
99.00	99.00	-0.95	PENTE L=1.14 (0.28%) P=-0.25%	N100	
100.00	100.00	-1.00	PENTE L=1.14 (0.28%) P=-0.25%	N101	
101.00	101.00	-1.05	PENTE L=1.14 (0.28%) P=-0.25%	N102	
102.00	102.00	-1.10	PENTE L=1.14 (0.28%) P=-0.25%	N103	
103.00	103.00	-1.15	PENTE L=1.14 (0.28%) P=-0.25%	N104	
104.00	104.00	-1.20	PENTE L=1.14 (0.28%) P=-0.25%	N105	
105.00	105.00	-1.25	PENTE L=1.14 (0.28%) P=-0.25%	N106	
106.00	106.00	-1.30	PENTE L=1.14 (0.28%) P=-0.25%	N107	
107.00	107.00	-1.35	PENTE L=1.14 (0.28%) P=-0.25%	N108	
108.00	108.00	-1.40	PENTE L=1.14 (0.28%) P=-0.25%	N109	
109.00	109.00	-1.45	PENTE L=1.14 (0.28%) P=-0.25%	N110	
110.00	110.00	-1.50	PENTE L=1.14 (0.28%) P=-0.25%	N111	
111.00	111.00	-1.55	PENTE L=1.14 (0.28%) P=-0.25%	N112	
112.00	112.00	-1.60	PENTE L=1.14 (0.28%) P=-0.25%	N113	
113.00	113.00	-1.65	PENTE L=1.14 (0.28%) P=-0.25%	N114	
114.00	114.00	-1.70	PENTE L=1.14 (0.28%) P=-0.25%	N115	
115.00	115.00	-1.75	PENTE L=1.14 (0.28%) P=-0.25%	N116	
116.00	116.00	-1.80	PENTE L=1.14 (0.28%) P=-0.25%	N117	
117.00	117.00	-1.85	PENTE L=1.14 (0.28%) P=-0.25%	N118	
118.00	118.00	-1.90	PENTE L=1.14 (0.28%) P=-0.25%	N119	
119.00	119.00	-1.95	PENTE L=1.14 (0.28%) P=-0.25%	N120	
120.00	120.00	-2.00	PENTE L=1.14 (0.28%) P=-0.25%	N121	
121.00	121.00	-2.05	PENTE L=1.14 (0.28%) P=-0.25%	N122	
122.00	122.00	-2.10	PENTE L=1.14 (0.28%) P=-0.25%	N123	
123.00	123.00	-2.15	PENTE L=1.14 (0.28%) P=-0.25%	N124	
124.00	124.00	-2.20	PENTE L=1.14 (0.28%) P=-0.25%	N125	
125.00	125.00	-2.25	PENTE L=1.14 (0.28%) P=-0.25%	N126	
126.00	126.00	-2.30	PENTE L=1.14 (0.28%) P=-0.25%	N127	
127.00	127.00	-2.35	PENTE L=1.14 (0.28%) P=-0.25%	N128	
128.					

Plan terrier 2

Ech: 1/500

Volaville

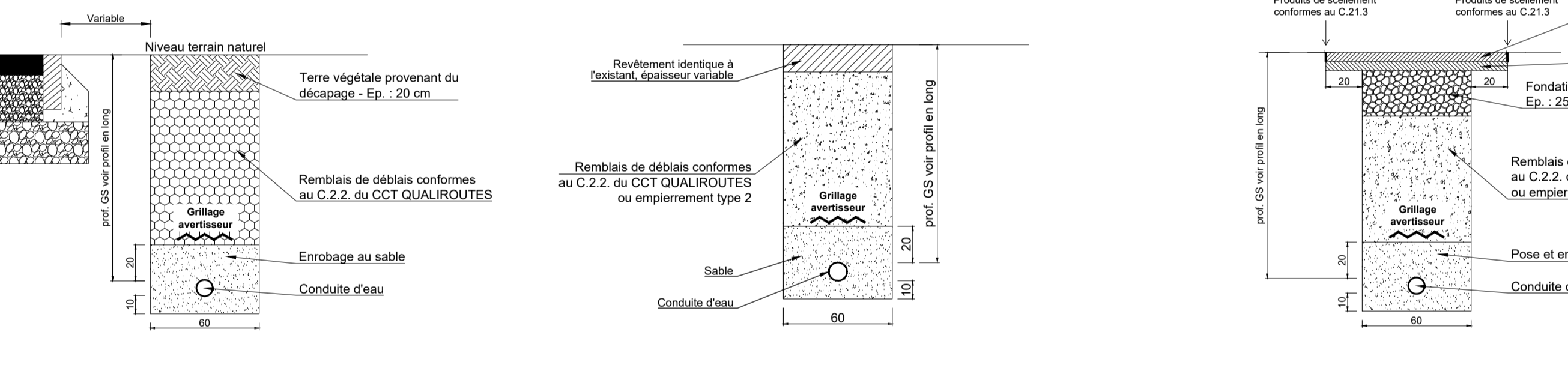


- LEGENDE**
- DN 80 mm fonte
 - DN 80 mm fonte
 - DN 110 mm PVC
 - ⊕ Bouche incendie
 - ⊕ Vanne en terre
 - ⊕ Chambre de vanne
 - Câble tel.
 - Câble haute tension
 - VOO
 - Tuyau d'égout
 - Limite cadastrale à poser
 - DE 90 mm PVC
 - DE 63 mm PVC
 - Vanne en terre
 - ⊕ Bouche incendie
 - ⊕ Bouche incendie - point bas
 - ⊕ Bouche incendie - Point haut

Coupe type de la réfection en accotement non revêtu
 Ech:1/25

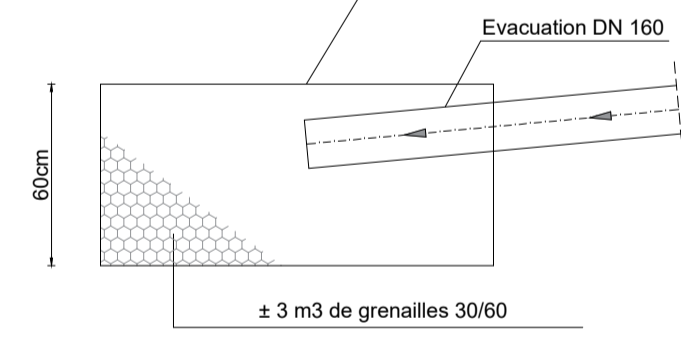
Coupe type de la réfection en accotement revêtu ou en chemin empierré
 Ech:1/25

Coupe type de la réfection en voirie communale
 Ech:1/25

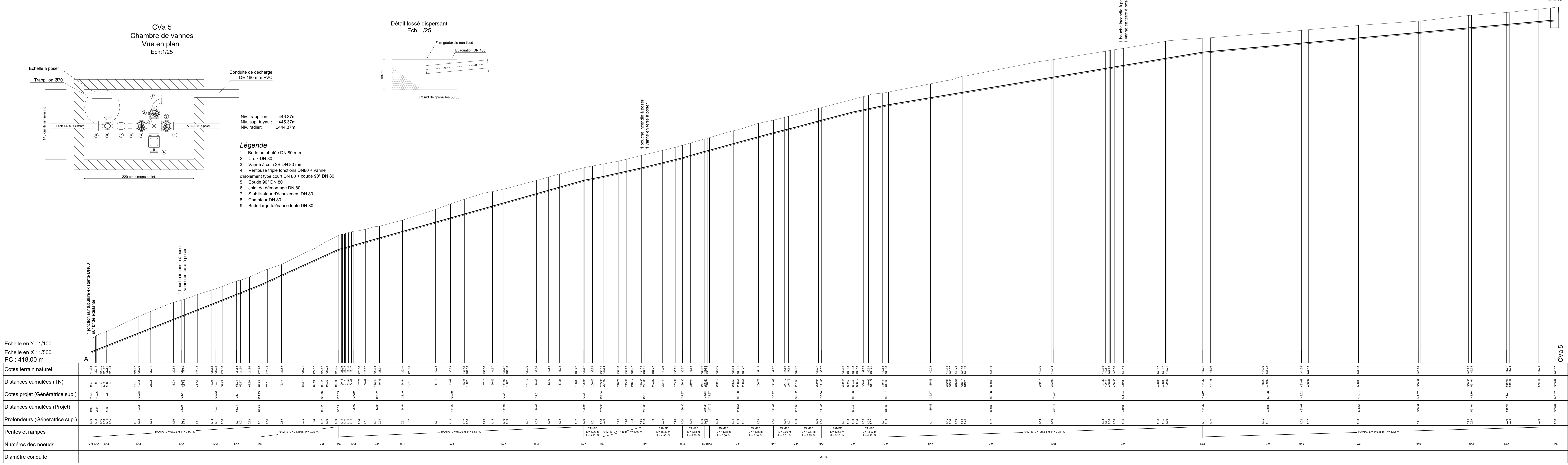
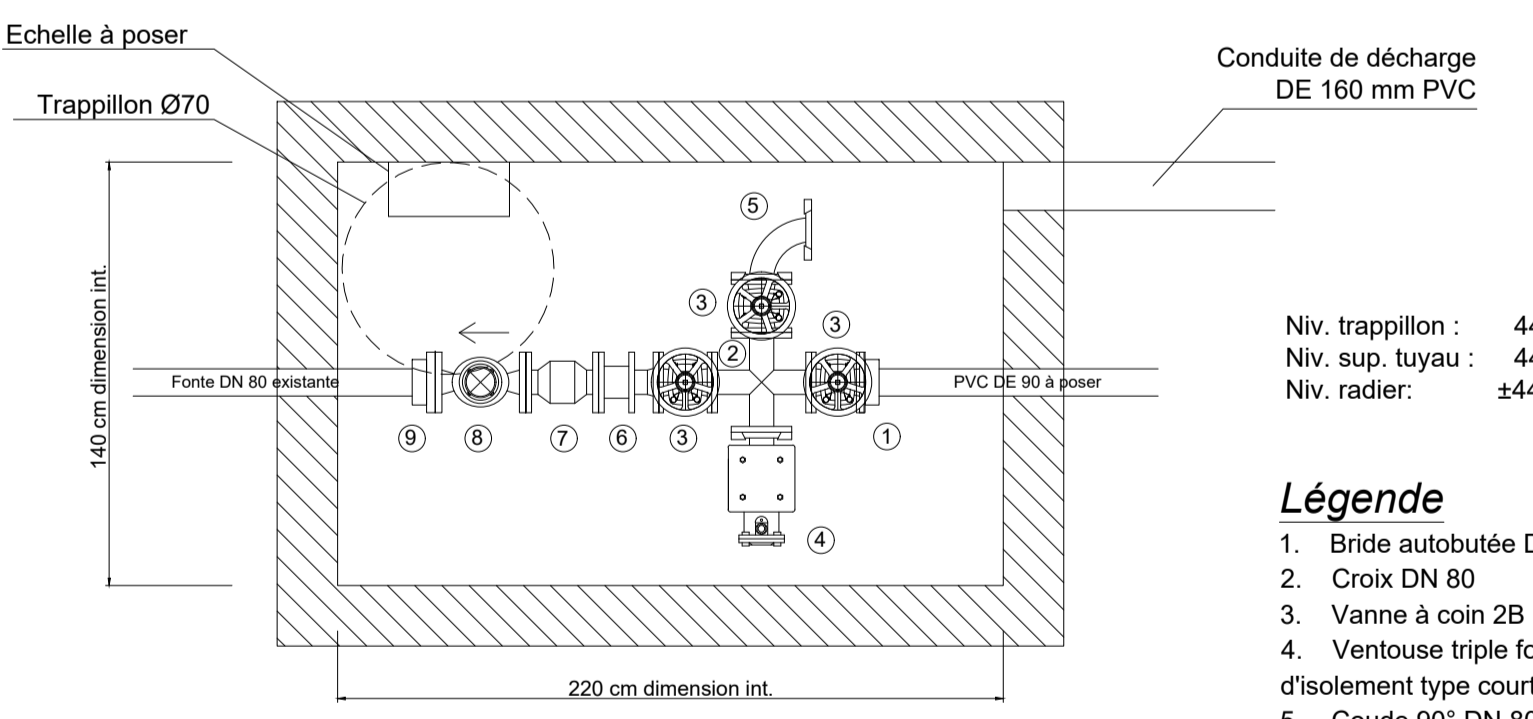


Profil en long A - CVa 5
 Rue des Fouilles

Détail fossé dispersant
 Ech: 1/25



CVa 5
 Chambre de vannes
 Vue en plan
 Ech:1/25



Remarque importante
 La position, le nombre et la nature des canalisations et câbles existants sont donnés à titre indicatif. L'entrepreneur est tenu de les localiser sur base de ses propres investigations.

Commune de Léglise
 Rue de la Chapelle, 2
 B-6860 LEGLISE
 TEL : 063/43.00.00

PROJET
 COMMUNE DE LEGLISE
 Distribution d'eau 2025
 Remplacement de la distribution d'eau à Volaville

OBJET DU PLAN
 Plan terrier 2, profil en long A - B et coupes types, détails

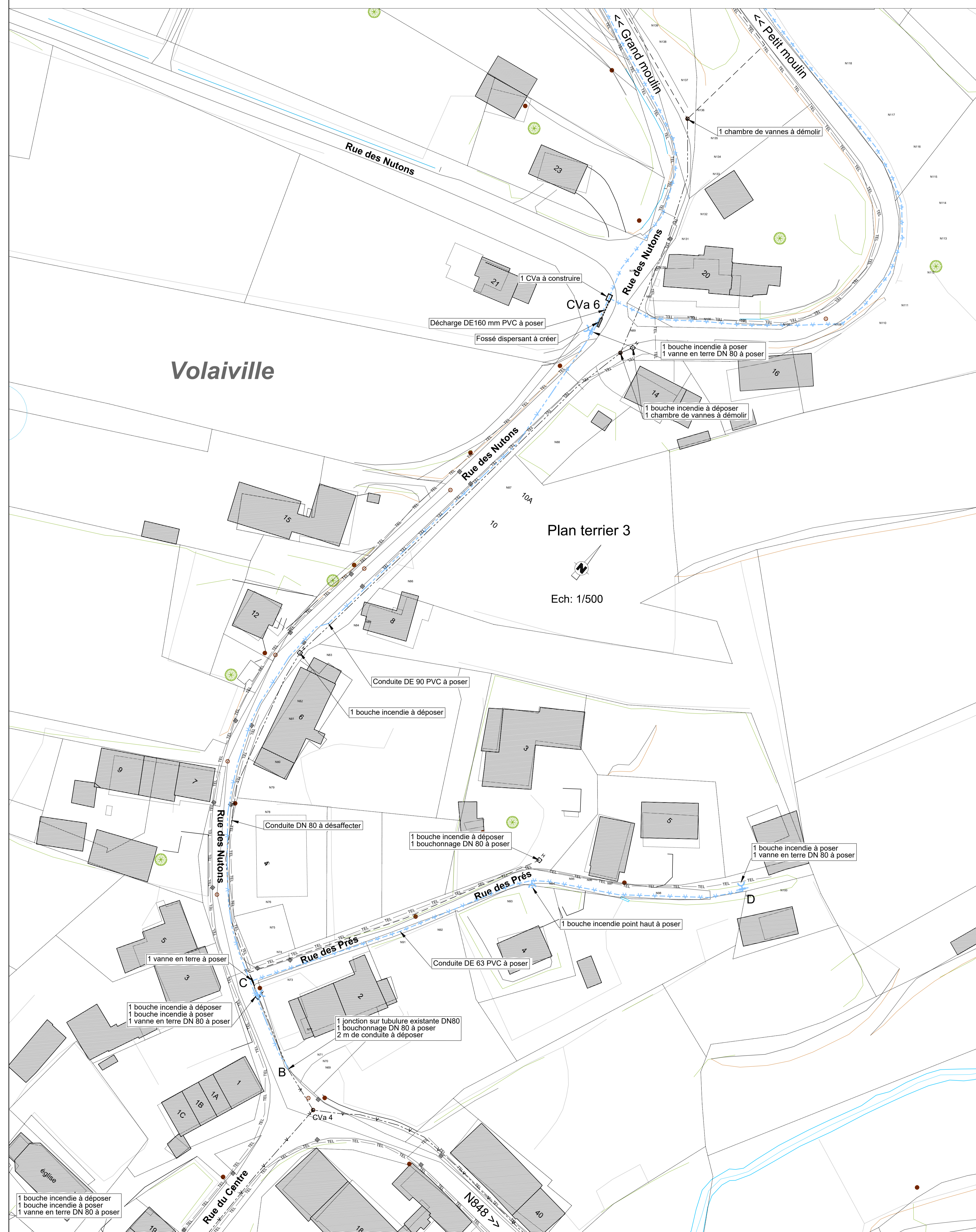
AUTEUR DE PROJET
Bureau d'études GDBE Ingénierie
 Rue du Briga 3
 B-4724 Houdremont
 TEL : 063/22.24.70
 E-MAIL : info@gdbe.be

REF. CLIENT 2024-AN-10-SE **STADE DU PROJET** PROJET **ETUDE PAR** GD

NUMERO DE DOSSIER 25_0105_AL **DESINE LE** 12.05.2025 **DESINE PAR** GD

SCHELLES DIVERSES **NUMERO DE PLANS** 5 **PLAN N°** 2

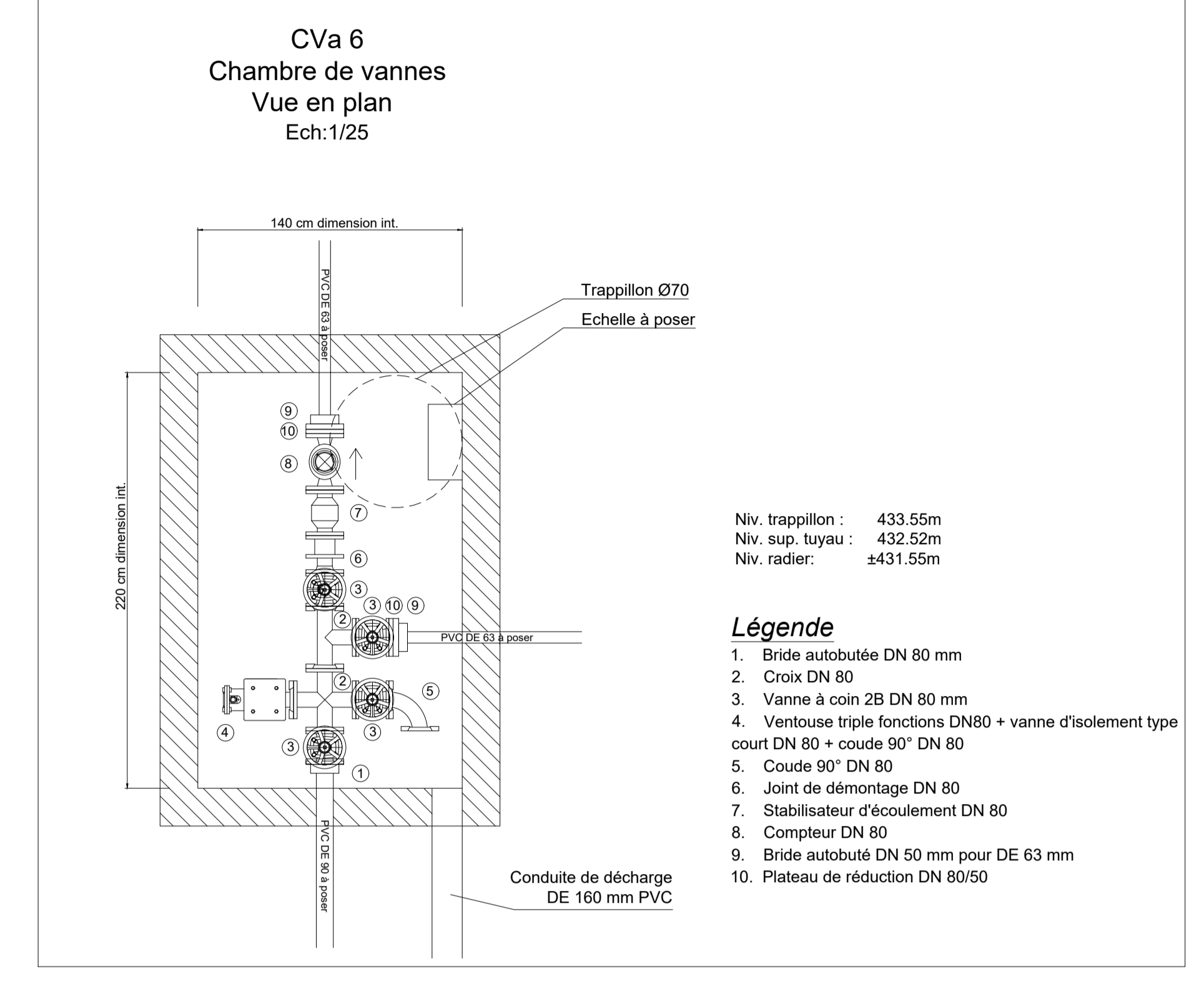
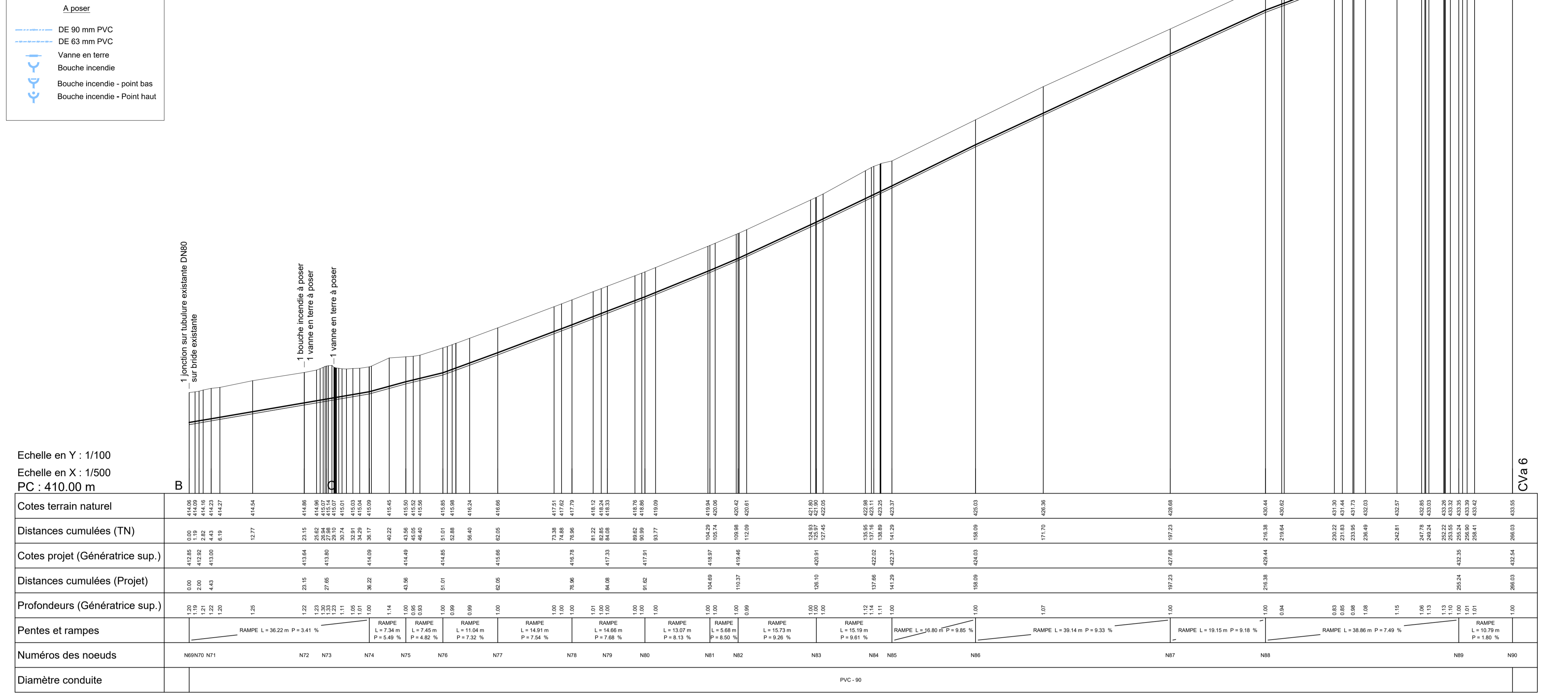
INDICES	MODIFICATIONS	DATE	DESIGNATEUR
E			
D			
C			
B			
A			



LEGENDE

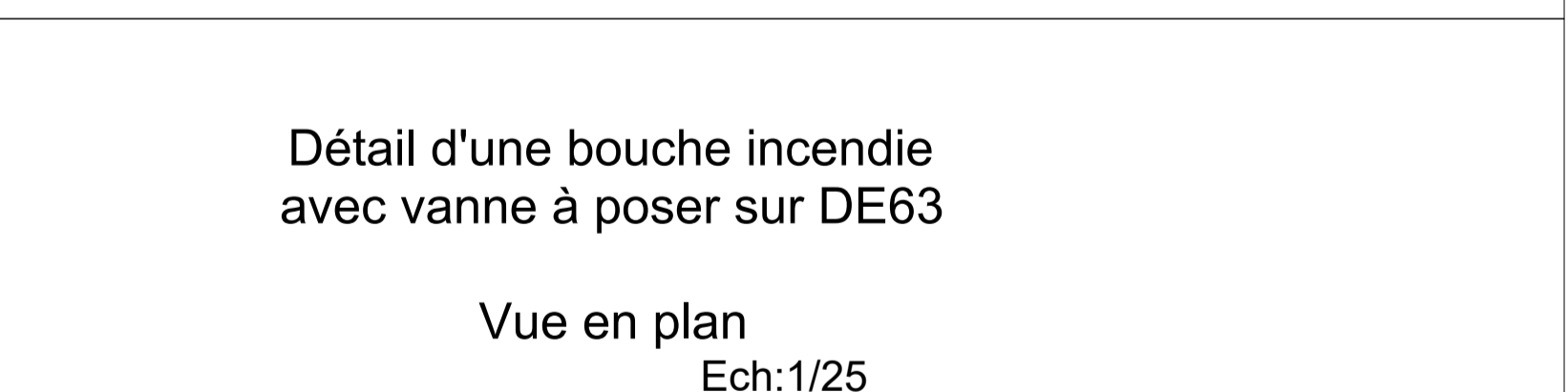
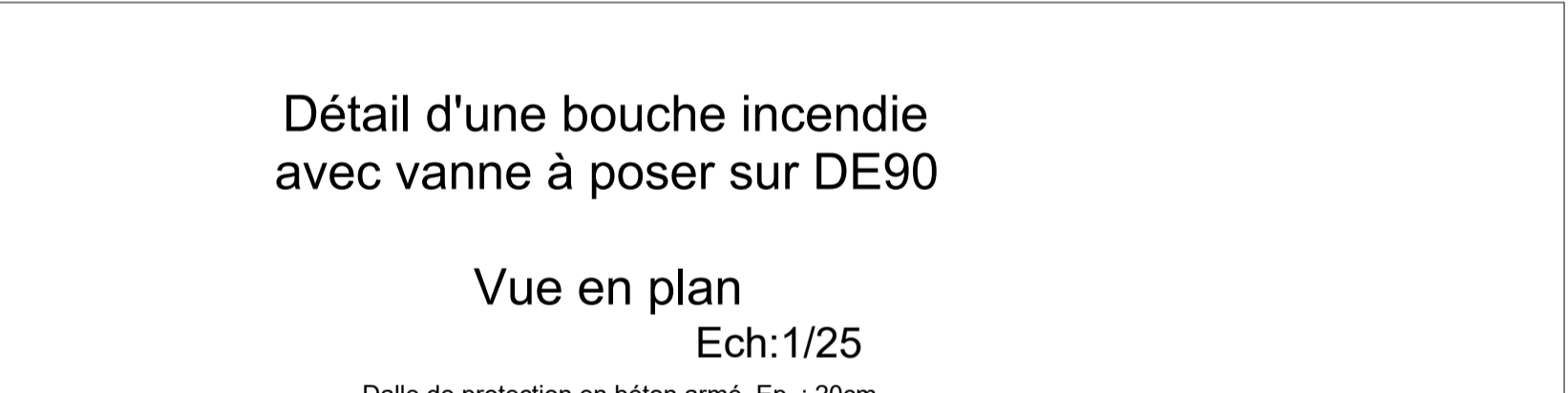
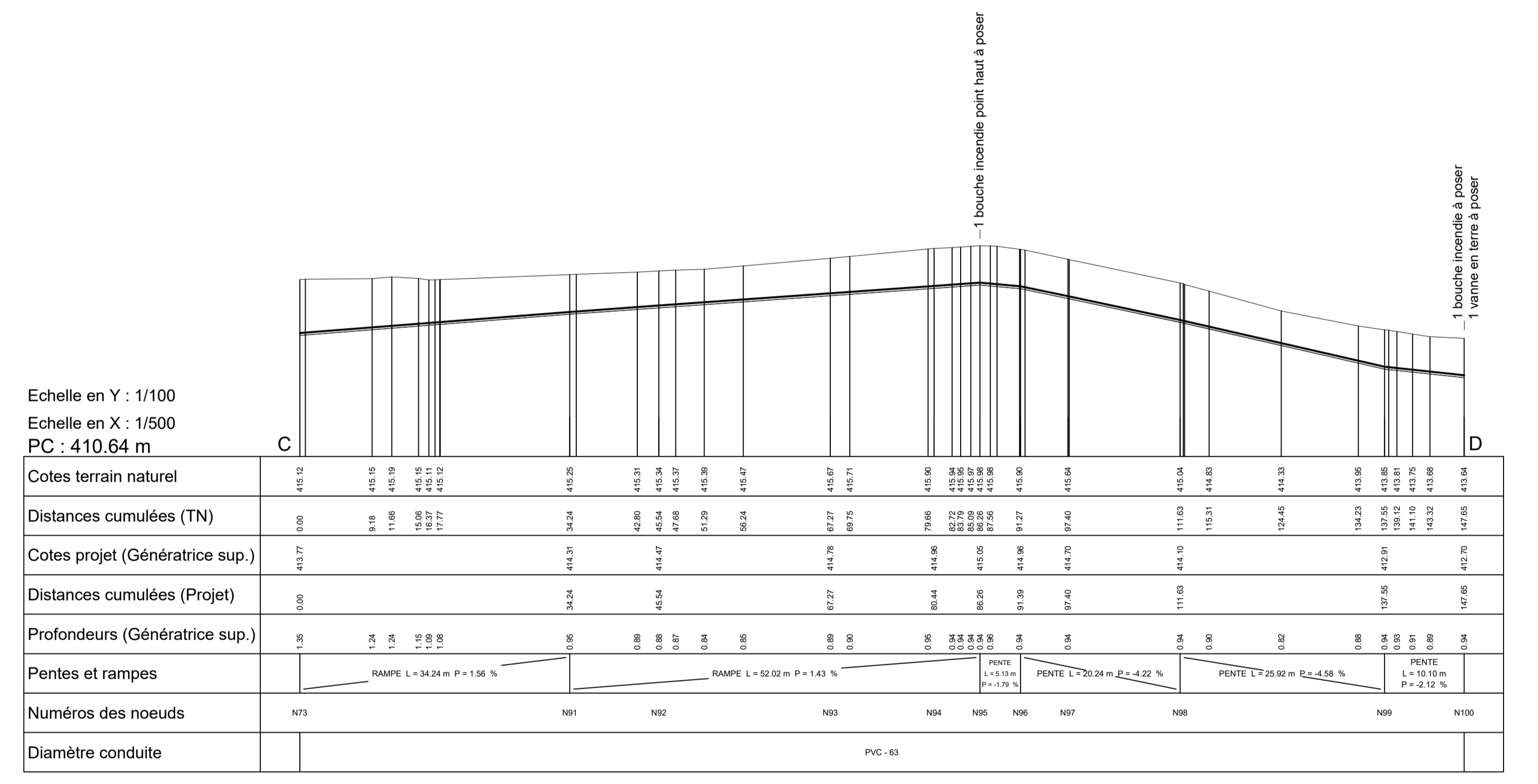
- Existant
- DN 60 mm fonte
- DN 80 mm fonte
- DN 110 mm PVC
- ⊕ Bouche incendie
- ⊕ Vanne en terre
- ⊕ Chambre de vannes
- TEL Câble tel
- HT Câble haute tension
- ⊕ VOT
- Type d'égout
- Limite cadastrale
- À poser
- DE 90 mm PVC
- DE 63 mm PVC
- ⊕ Vanne en terre
- ⊕ Bouche incendie
- ⊕ Bouche incendie - point bas
- ⊕ Bouche incendie - point haut

Profil en long B - CVa 6
Rue des Nutons

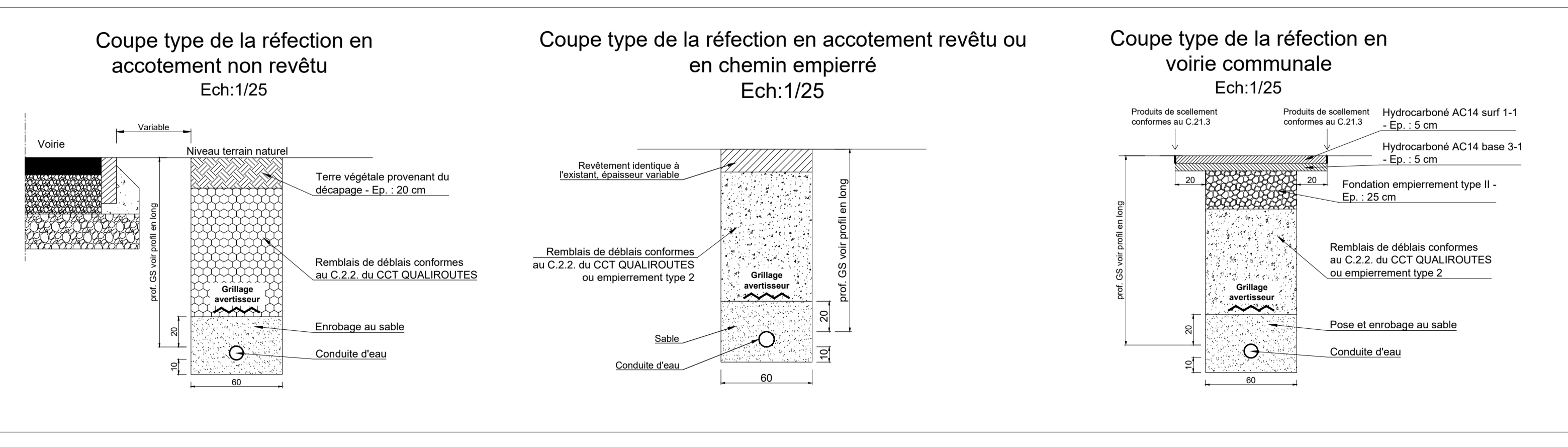


Plan terrier 3
Ech: 1/500

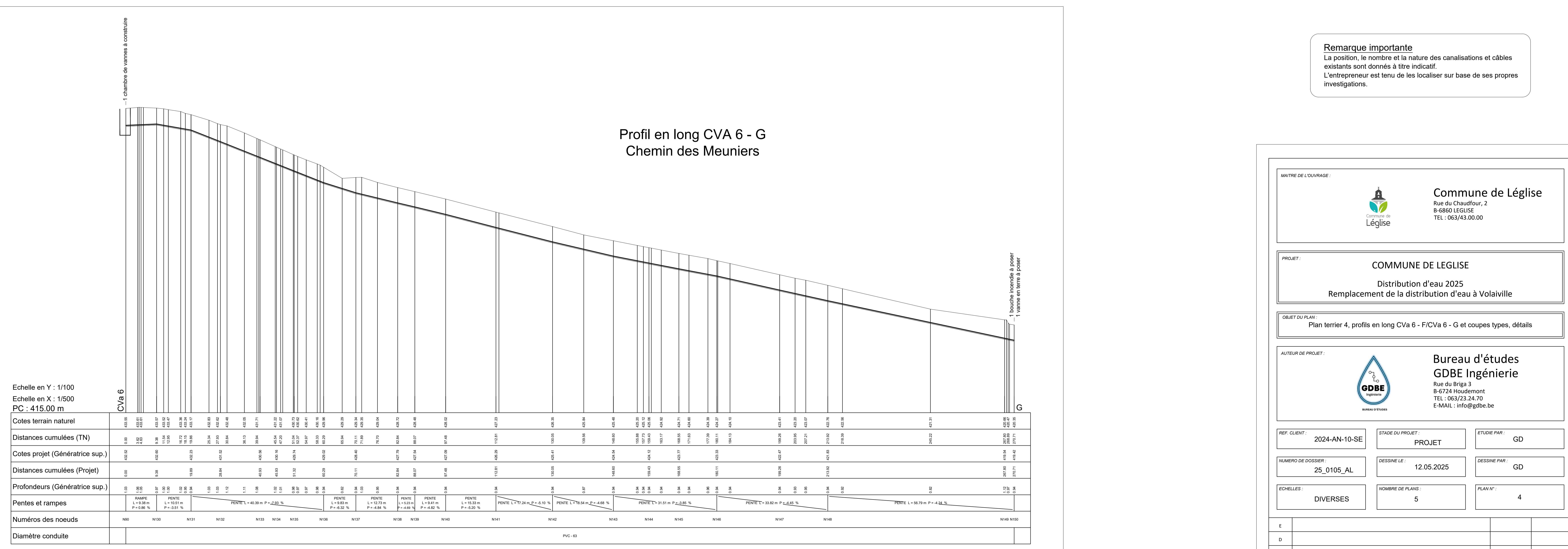
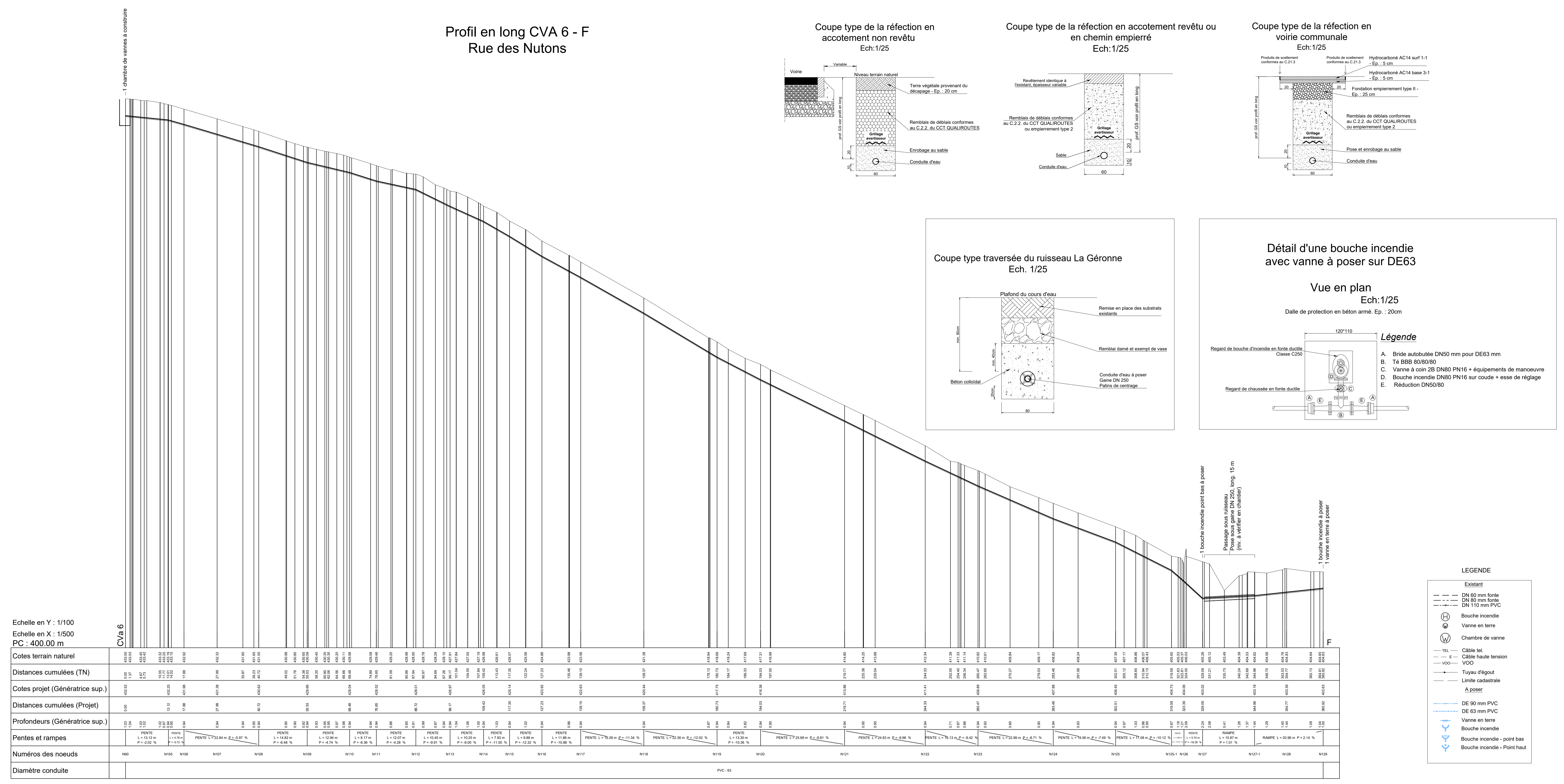
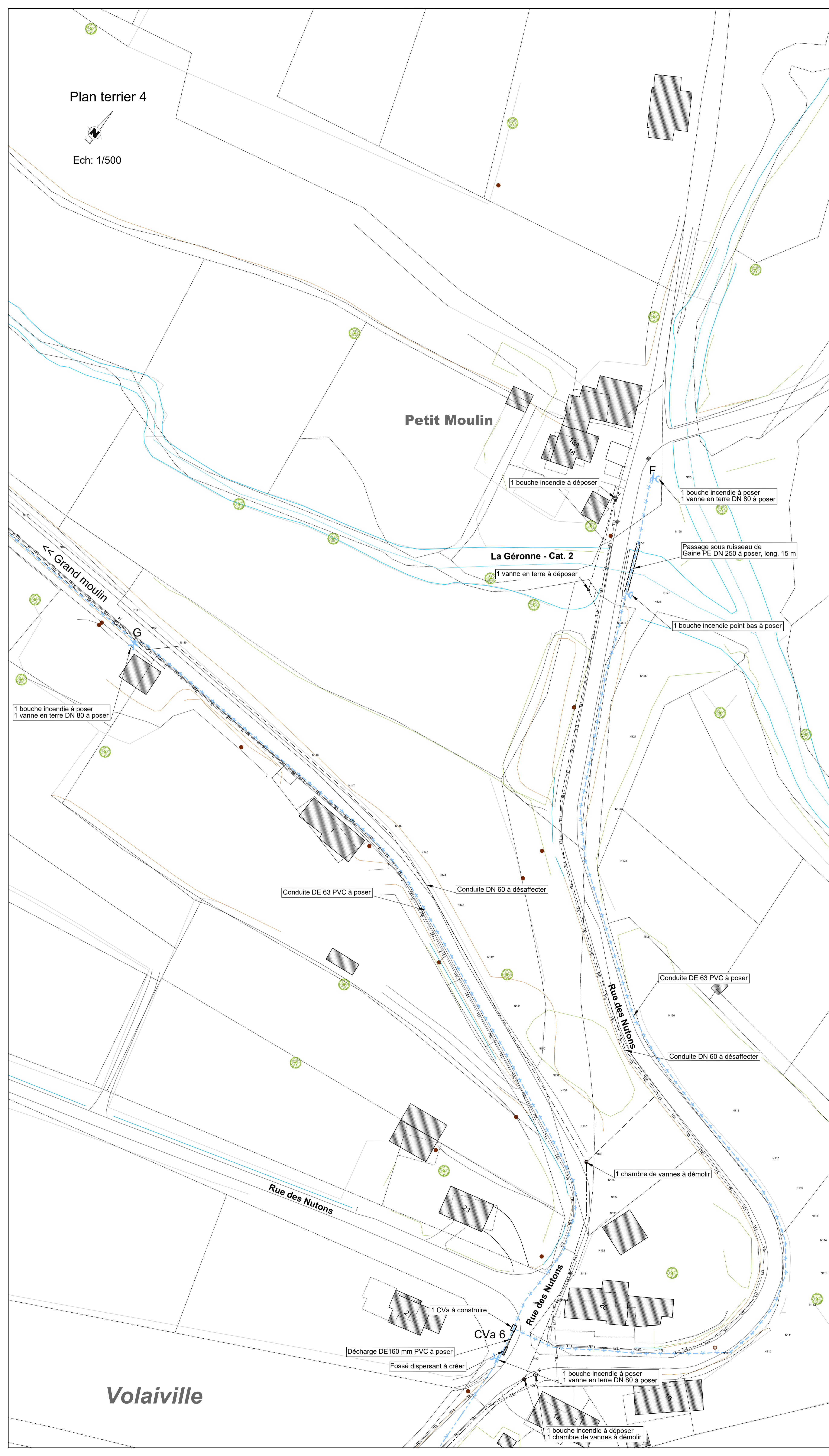
Profil en long C - D
Rue des Prés



Remarque importante
La position, le nombre et la nature des canalisations et câbles existants sont donnés à titre indicatif. L'entrepreneur est tenu de les localiser sur base de ses propres investigations.



<p>Commune de Léglise Rue du Châtaffeur, 2 B-6860 LEGLISE TEL : 063/43.00.00</p>					
<p>PROJET COMMUNE DE LEGLISE Distribution d'eau 2025 Remplacement de la distribution d'eau à Volaviille</p>					
<p>OBJET DU PLAN Plan terrier 3, profils en long B - CVa / C - D et coupes types, détails</p>					
<p>AUTEUR DU PROJET <p>Bureau d'études GDBE Ingénierie Rue du Briga 3 B-6724 Houdremont TEL : 063/23.24.70 E-MAIL : info@gdbe.be</p> </p>					
REF. CLIENT:	2024-AN-10-SE	STADE DU PROJET:	PROJET	ETUDE PAR:	GD
NUMERO DE DOSSIER:	25_0105_AL	DESINE LE:	12.05.2025	DESINE PAR:	GD
SCHEMES:	DIVERSES	NUMERO DE PLANS:	5	PLAN N°:	3
E					
D					
C					
B					
A					
INDICES	MODIFICATIONS	DATE	DESIGNATEUR		



Commune de Léglise
Rue du Chauffeur, 2
B-6860 LEGLISE
TEL : 063/43.00.00

COMMUNE DE LEGLISE
Distribution d'eau 2025
Remplacement de la distribution d'eau à Volaiville

Bureau d'études GDBE Ingénierie
Rue du Briga 3
B-4724 Houdremont
TEL : 063/23.24.70
E-MAIL : info@gdb.be

REF CLIENT: 2024-AN-10-SE
STADE DU PROJET: PROJET
ETUDE PAR: GD

NUMERO DE DOSSIER: 25_0105_AL
DESINEE LE: 12.05.2025
DESINEE PAR: GD

SCHEMELLES: DIVERSES
NOMBRE DE PLANS: 5
PLANS N°: 4

A Modification coupe passage sous ruisseau suivant avis SPT
DATE: 11.03.2025
DESIGNATEUR: GD

INDICES: MODIFICATIONS
DATE: DATE
DESIGNATEUR: DATE

